



Sutton-at-Hone

Church of England Primary School

We are God's family – learning together,
loving together and growing together –
striving to be the best we can be for ourselves,
for God and for others.

<https://www.sutton-at-hone.kent.sch.uk/>

Meet the Staff



Mrs K Trowell

HEADTEACHER



Mrs M Tolhurst

DEPUTY HEADTEACHER/ EYFS TEACHER
(RASHFORD CLASS)



Mrs M Young

INCLUSION LEADER



Mrs S Ashley

SEND ASSISTANT



EYFS Staff



Mrs E Champion

EYFS Teacher



Mrs L Richards

EYFS Teacher



Mrs S Peake

EYFS Teacher



Mrs D Fielder

EYFS TEACHING ASSISTANT



Mrs L Gardner

EYFS TEACHING ASSISTANT



Arbor



- Our school uses Arbor as its Managing Information System (MIS)
- Arbor is our primary method of communication with you via email or text message
- Please ensure you complete the consent and medical forms on Arbor.

Dojo



- We also use Class Dojo.
- Teachers can share information with the parents through our Class Story.
- Parents can send their child's teacher a private message, for example if somebody different was collecting them from school.



Settling in and Transition Sessions

Thursday 4th July 3:30 - 4:00

Parents Meeting (in school hall with children)

Monday 8th, Tuesday 9th or Wednesday 10th July 2:00 - 2:40

Stay and Play with parents/carers

(Please phone or email the school to book a slot)

Thursday 11th July

15 minute slot between 8:30 and 17:00

Meeting with your child's class teacher either on Zoom or in person



September

Tuesday 3rd September - Friday 6th September

The children will all be in from 8.30am until 12.00pm.

Monday 9th September - Friday 13th September

The children will all be in from 8.30am until 1.15pm
(staying for lunch)

Monday 16th September onwards

Full days: 8.30am – 3.00pm.

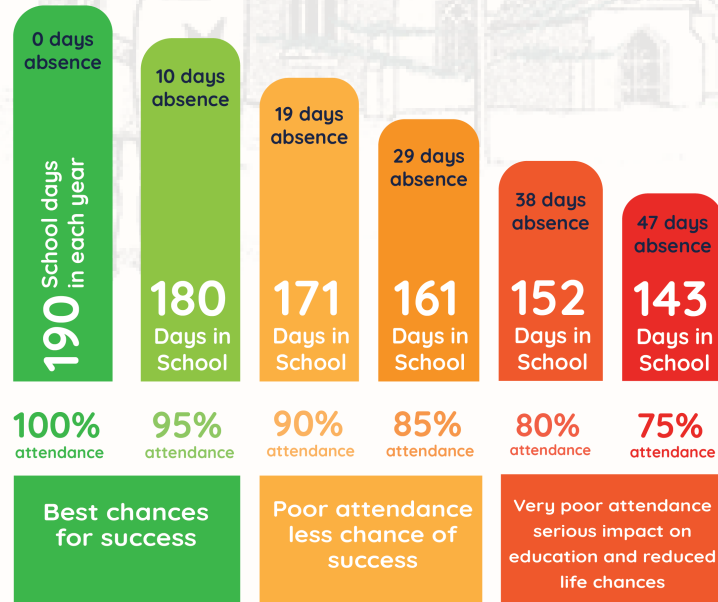
Please drop off and pick up from the Foundation Stage Gate
(at the back of the staff carpark)



Good attendance at Sutton-at-Hone is key to success...

175 days non term days

All this time for shopping, holidays, appointments etc.



Attendance



Uniform

Please visit the Uniform page of our website for more information about our uniform.

Please ensure that all of your children's belongings are clearly named.





PE Kit

PE lessons will begin after the October half term. On the day that children have PE, they come to school in their PE kit.

We will inform you which team your child is in so that you know what colour **Polo shirt** to buy.



School Dinners and Packed Lunch

- All children in Reception, Year 1 and Year 2 are entitled to Free School Meals.
- Alternatively, your child could bring in a packed lunch.

Please do not send in any nuts or nut related products as we are a nut free school!



Milk and a healthy snack

It is important that you let us know if your child has any allergies.

Cool Milk



- **Milk** – Your child will receive milk for free until the week of their 5th birthday. After that you can pay for milk by visiting the Cool Milk website.
- **Healthy snack** – the children are provided with a healthy snack (usually fruit) daily.



What you need for school



A named book bag or small rucksack



A named water bottle



A named pair of wellington boots (which can be left at school)

Please also provide a spare set of clothes which can be kept at school.

EYES



Breakfast and After School Club

At Sutton-at-Hone we have a Breakfast Club and an Afterschool Club.

The prices are:

Breakfast Club | from 7:30 - £3.50 /day - (£3.00 for siblings)

Afterschool Club | until 18:00 £12.00 /day - (£11.50 for siblings)

If you would like a place for your child please complete the application form on our website. Applications must be completed by Wednesday 17th July for your child to start in September.

Places are allocated on a 'first come, first served' basis.



Learning at Sutton-at-Hone

The Early Years Framework includes 7 areas of learning and development which are all important and interconnected.

Literacy	Comprehension Word Reading Writing
Mathematics	Numbers Numerical patterns
Understanding the World	Past and Present People, Culture and Communities The Natural World
Expressive Arts and Design	Creating with Materials Being Imaginative and Expressive

Communication and Language	Listening, Attention and Understanding Speaking
Personal, Social and Emotional development	Self-Regulation Managing Self Building Relationships
Physical Development	Gross Motor Skills Fine Motor Skills





Learning in EYFS



Phonics and reading












The phonics scheme we use is called Little Wandle Letters and Sounds.

During your child's first term we will invite you into school to tell you more about how we teach phonics and how you can help your child at home.

Phase 2 grapheme information sheet

Autumn 1

Grapheme and mnemonic	Picture card	Pronunciation phrase	Formation phrase
 	 snake	Show your teeth and and let the s hiss out sssss sssss	Under the snake's chin, slide down and round its tail.
 	 astronaut	Open your mouth wide and make the a sound at the back of your mouth aaa	Around the astronaut's helmet and down into space.
 		Open your lips; put the tip of your tongue behind your teeth and press ttt	From the tiger's nose to its tail, then follow the stripe across the tiger.



We look forward to welcoming you and your child to our school

Please contact the school if you have any questions

